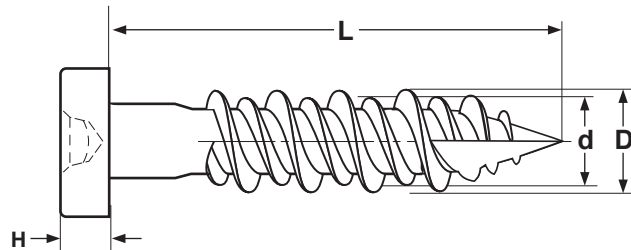
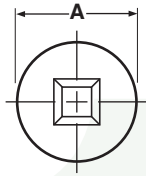


WOOD SCREWS

Modified Pan Square
Recess, High-Low Thread

TYPE-17 FACE FRAMING



FACE FRAMING SCREWS - MODIFIED PAN SQUARE RECESS, HIGH-LOW THREAD								
Nominal Diameter & Threads per Inch	A		H		D		d	Driver Size
	Head Diameter		Head Height		High Thread Major Diameter		Low Thread Major Diameter	
	Max	Min	Max	Min	Max	Min	Ref	
7 - 15	0.289	0.282	0.120	0.106	0.154	0.147	0.130	#2
7 - 15	0.303	0.283	0.135	0.120	0.158	0.148	0.130	#2
Tolerance on Length			All Lengths			± 0.05		

There are multiple acceptable configurations for Face Framing screws with high-low thread. Two such sets of dimensions are listed here.

Description	An externally threaded fastener with a rectangular-shaped head with a square recess. The shank has an unthreaded section directly below the head. The screw's thread pattern has a double-lead, consisting of a high and low thread. The lower thread diameter is approximately 80% that of the higher thread, which is sharper and flatter than a standard thread. The tip of the screw has a piercing point and chip cavity.
Applications / Advantages	The high-low thread offers superior holding power across a wide range of woods and is less likely to split the material in which it is used. These are also referred to as "pocket hole" screws due to the type of hole into which the fastener is inserted. Such holes are drilled at an angle of approximately 15° into one workpiece and joined to the other piece by the screw. Such fastening methods don't require access to the inside of the joint to make repairs or adjustments.
Material	C1022 (or equivalent) case-hardened steel
Surface Hardness	Vickers HV 450 minimum
Torque	21 in.-lbs. minimum
Plating	See Appendix-A for plating information