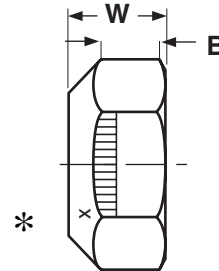
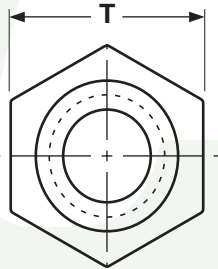


NUTS

STOVER®-EQUIVALENT LOCK

Grade B



GRADE B AUTOMATION STYLE LOCK NUTS

RB&W Corp.

Nominal Size in Inches	T			W		B
	Width Across Flats			Overall Thickness		Hex Height
	Nom	Max	Min	Max	Min	Min
1/4	7/16	0.4385	0.428	0.257	0.243	0.145
5/16	1/2	0.5020	0.489	0.302	0.292	0.166
3/8	9/16	0.5645	0.551	0.377	0.360	0.198
7/16	11/16	0.6895	0.675	0.430	0.410	0.223
1/2	3/4	0.7520	0.736	0.510	0.490	0.262
5/8	15/16	0.9395	0.922	0.645	0.621	0.329
3/4	1-1/8	1.1270	1.088	0.750	0.702	0.382
7/8	1-5/16	1.3145	1.2690	0.862	0.810	0.450
1	1-1/2	1.5020	1.4500	0.958	0.902	0.513

Description	<i>Grade-B Automation Lock Nut:</i> An all-metal, one-piece hex nut, thicker than a Grade-C across the flats, which derives its prevailing torque characteristics from controlled distortion of its top threads from their normal helical form to a more elliptical shape.
Applications/ Advantages	<i>Grade-B:</i> These nuts are reusable and can withstand temperatures of up to 450°F. The conical-shaped top enables this nut to be used with an automatic feeder. The Grade-B can be used with low or medium carbon steel screws (i.e. a SAE Grade-2 or Grade-5).
Material	Low carbon steel.
Proof Load	120,000 psi.
Plating	See Appendix-A for plating information.

*Product standards require all grade-marked nuts 1/4" diameter and larger to have a raised or depressed insignia identifying its manufacturer. "X" represents one location such a marking may appear.