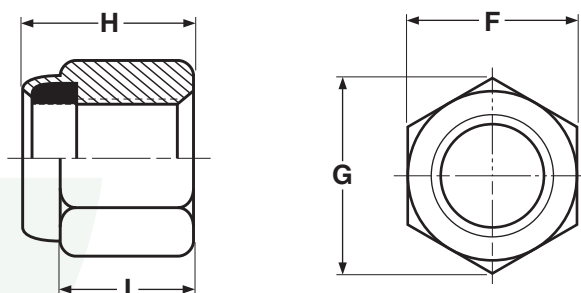


## METRIC FASTENERS

## NUTS

DIN 982 Nylon Insert  
Lock Nuts, High Type

METRIC - NYLON INSERT STOP NUTS, HIGH TYPE						DIN 982
Nominal Size	F		G	H		I
	Width Across Flats		Width Across Corners	Thickness		Wrenching Height
	Max	Min	Min	Max	Min	Min
M4	7.00	6.78	7.66	6.00	5.52	2.9
M5	8.00	7.78	8.79	6.80	6.22	4.4
M6	10.00	9.78	11.05	8.00	7.42	4.9

<b>Description</b>	Hex nut with a metric thread pitch and a nylon-filled collar at its back end. This "High-Type" nut is 20-40% thicker in overall height than the standard DIN 985 variety. When a screw reaches the collar, the threads and nylon form a tight, frictional fit, restricting movement of the screw when it is subjected to vibration. The nylon insert comes in various colors.
<b>Applications/ Advantages</b>	Preferred when a greater length of thread engagement is desired.
<b>Material</b>	<i>Stainless</i>
	A2: A2 Stainless Steel A4: A4 Stainless Steel